



AT3

OUTDOOR AND INDOOR
CELLULAR
TRACKING DEVICE



AT3 CELLULAR ASSET TRACKER: **FLEXIBLE OUTDOOR AND INDOOR ASSET TRACKING.**

Geoforce's battery-powered, compact AT3 asset tracker delivers accurate and dependable tracking indoors and outside. This cost-effective tracking system—the AT3 paired with Geoforce's Track and Trace web-based software—means better insight and smoother operations at the right price.

Track pallets inside your warehouse or specialty tool boxes across the open road. The AT3 combines long-lasting battery life, reliable reporting, and hassle-free installation and operation.

If you're looking for a heavyweight solution in a lightweight package, take a closer look at the AT3.

TRACK AND TRACE



CONTAINERS



PALLETS



TOOL BOXES



COMPRESSORS



TRAILER CHASSIS



RENTAL EQUIPMENT



PELICAN CASES

AND MORE...

ADVANTAGES

- GPS location data reported over the cellular network when the AT3 is outdoors (requires good sky view)
- "Proximity location" when the AT3 is indoors
- Off-the-shelf deployment
- Extended battery life

KEY FEATURES

- GPS and Wi-Fi location reporting
- Multiple reporting rates available
- Cost-efficient and reliable design
- Small footprint, lightweight (ideal for pallet tracking)
- IP67 rugged & dust / water-resistant enclosure

MULTIPLE REPORTING RATES

Battery replacement schedules will vary based on operating conditions and the reporting rate configuration:

CONFIGURATION

1 transmit per day
4 transmits per day
12 transmits per day
24 transmits per day

ESTIMATED BATTERY LIFE

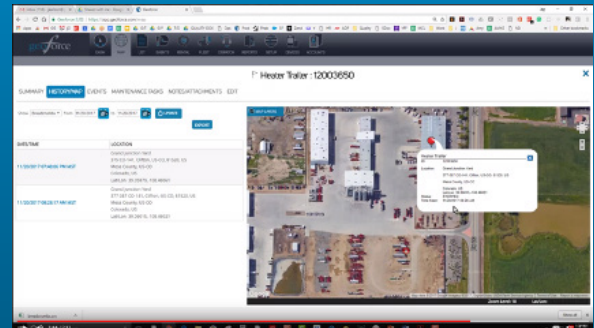
10 years
3 years
1 year
6.1 months

Battery life will vary based on transmit rates and operative conditions.

MANAGE YOUR ASSETS WITH GEOFORCE TRACK AND TRACE

Geoforce designed and built its web-based and mobile software with field operations in mind, enabling us to provide innovative Track and Trace solutions for all of your field asset tracking needs.

By combining this cloud-based software with rugged GPS tracking devices and global satellite/cellular network integration, Geoforce's Track and Trace facilitates asset location and retrieval, rental invoice auditing, service delivery verification, inspection compliance, and equipment maintenance alerts. **Indoors and out.**



SPECIFICATIONS

COMMUNICATION

Cellular LTE Cat-M, NB-IoT

LOCATION SERVICES

GPS
WiFi Access Point Triangulation, 10-250m

SENSORS

3-Axis Accelerometer (motion, movement, position/tilt)

PHYSICAL SPECIFICATIONS

Dimensions: 4.9" x 1.4" x 0.69"
(124mm x 35.5mm x 17.4mm)
Weight 2.5 oz.

BATTERY PACK

Non-Rechargeable, AA lithium-thionyl chloride battery pack

ENVIRONMENTAL

Operating Temperature -40°C to +85°C (-40°F to 185°F)

ENCLOSURE

20% Fiberglass Polycarbonate w/ ultrasonic welds
IP67, Rugged Dust/Waterproof