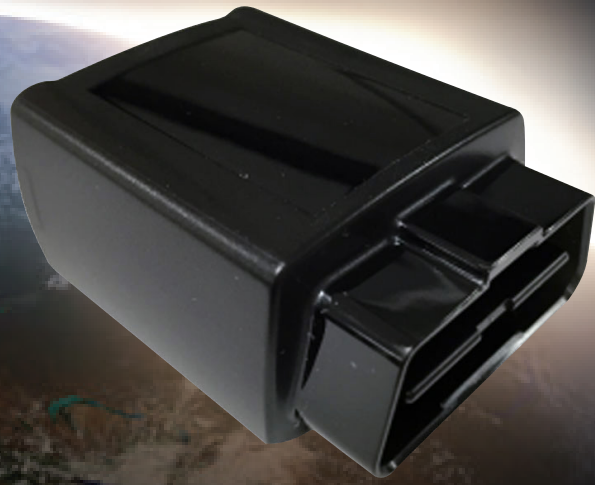




VT1

**PLUG AND PLAY
VEHICLE TRACKER**



LOCATION AND VEHICLE DATA WHEN YOU NEED IT

The Geoforce Cellular Vehicle Tracker is a real-time location reporting module installed in mobile assets such as light commercial trucks. By recording speed, GPS, odometer mileage, run time and harsh/unsafe driving, the VT1 enables companies to optimize their fleet operations while bolstering the safety of their most important resource, their people.



Maximize Service Verification and Worker Safety

Worker productivity is crucial when it comes to turning a profit. However, companies struggle with finding the balance between maintaining increased operational efficiency and their workers' well-being. They often ask themselves, is it possible to have both high operational efficiency and worker safety?

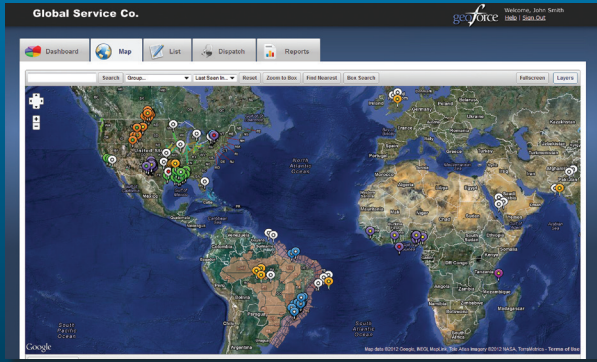
By keeping track of vehicle data like real-time location, engine runtime, and harsh driving, you can confirm that your drivers are meeting demands while keeping a watchful eye on the road.

The VT1 combined with Geoforce's Track and Trace software platform allows you to easily verify service delivery to ensure both worker and customer satisfaction.

KEY FEATURES

- Plugs into vehicle OBD-II port: no tools or professional installers required
- Compact, low-profile hardware
- Cost-efficient and reliable design
- Operates on LTE Cat M1 wireless networks
- Provides frequent location verification and engine runtime data during operation
- Captured vehicle data stored and viewed in Geoforce *Track and Trace*
 - Vehicle Location (real-time)
 - Engine Runtime
 - Harsh Driving
 - Fast acceleration
 - Hard cornering
 - Harsh braking
 - Service Verification (history)
- Cable harness options available

MANAGE YOUR ASSETS WITH GEOFORCE TRACK AND TRACE



Geoforce designed and built its web-based and mobile software with field operations in mind, enabling us to provide innovative *Track and Trace* software for all your field asset tracking needs.

By combining this cloud-based software with rugged GPS tracking devices and global satellite network integration, Geoforce's *Track and Trace* facilitates asset location and retrieval, rental invoice auditing, service delivery verification, inspection compliance, and equipment maintenance alerts. Because field operations don't have to be chaotic.

SPECIFICATIONS

Cellular Network

| | |
|---------------|--------------------------------|
| 4G LTE Cat M1 | L3GPP Release 13 |
| | LTE (FDD) |
| | Bands: FDD 2, FDD 4 and FDD 12 |
| | SMS: MT/MO |

GPS Specification

| | |
|----------------------|---------------------------------|
| Receiver Type | 72 channel |
| Tracking Sensitivity | -165 dBm |
| Location Accuracy | +/- 2.5m CEP with good sky view |
| TTF Cold Start* | 27 seconds (typical) |
| TTF Hot Start* | 1 second (typical) |

*50%, 24static—130dBm, >6 Sats.

Power Requirement

| | |
|---------------------------|--------------------------------------|
| DC Power | 8-28V |
| 12V Battery Voltage Only | |
| Optional Internal Battery | 250 mAh Secondary Lithium Battery |

Physical Connection

| | |
|------------------|----------------------|
| OBDII Connector | J1962 |
| GPS Antenna | Integrated |
| Cellular Antenna | Integrated dual-band |

Mechanical

| | |
|-----------------------|--|
| Case Material | PC |
| Dimensions | 2.4" x1.8" x 1.1" (5.9 x4.6 x 2.8 cm) |
| Weight | < 2 oz. (34 grams) |
| Operating Temperature | -30°C to +70°C |

Certifications

PTCRB, FCC, ISED, AT&T, VZW

About Geoforce

Your teams and your equipment work in demanding environments. Your asset tracking technology needs to keep up. Armed with data from the edge of your operations, you can make better decisions and deliver better results. That's why at Geoforce we purpose-build rugged asset tracking technology and software that is trusted by the hardest working teams to track more than 160,000 assets in the toughest environments anywhere.