



# AT4

POWERED EQUIPMENT  
**CELLULAR ASSET**  
TRACKER



## LOCATION AND ENGINE RUNTIME DATA WHEN YOU NEED IT



### Improved Powered Equipment Reliability

Timely asset maintenance detects and corrects small issues before they become big, costly problems. Conditional maintenance based on actual engine runtime will help you catch problems while they are still manageable while minimizing wasted service calls or truck rolls.

By electronically collecting readings from remote assets instead of relying on calendar-based schedules, you'll easily stay ahead of your equipment and asset maintenance needs.

With the GeoForce AT4 Standard Equipment Tracker, we help you remove those blind spots by closely monitoring and managing your portable powered field assets.

The **AT4 Standard Equipment Tracker** enables equipment managers to reliably view engine runtime and location for portable powered equipment while deployed. The device also provides high data granularity and reporting frequency, which results in the effective management of portable powered equipment operating in cellular networks.

### REPORTING RATES

#### POWERED BY EQUIPMENT (IGNITION on)

- Reports every 15 minutes whether stationary or moving
- Provides frequent location verification and engine runtime data during operation

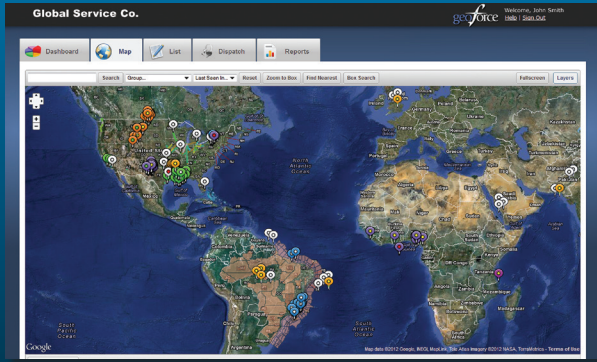
#### WHILE STATIONARY (IGNITION off)

- Reports every 12 hours
- Provides location and engine runtime data at a reduced cost

#### POWERED BY BACKUP BATTERY (IGNITION off)

- Reports every 5 minutes when moving and every 12 hours when stationary
- Provides high data granularity as equipment is being moved or transported

# MANAGE YOUR ASSETS WITH GEORFORCE *TRACK AND TRACE*



Geoforce designed and built its web-based and mobile software with field operations in mind, enabling us to provide innovative *Track and Trace* solutions for all of your field asset tracking needs.

By combining this cloud-based software with rugged GPS tracking devices and global satellite/cellular network integration, Geoforce's *Track and Trace* facilitates asset location and retrieval, rental invoice auditing, service delivery verification, inspection compliance, and equipment maintenance alerts. Because field operations don't have to be chaotic.

## SPECIFICATIONS

### General

Network Technologies	4G LTE CAT 1
Location Technology	31 Channel GPS (with SBAS)
Operating Voltage	12/24 VDC Vehicle Systems

### GPS

Location Technology	GPS
Enhancement Technology	SBAS: WAAS, EGNOS, MSAS
Tracking Sensitivity	-162 dBm
Acquisition Sensitivity	-156 dBm, (hot start) -148 dBm (cold start)
Location Accuracy	2.0m CEP (SBAS 24 hrs static)
Location Update Rate	1 Hz

### Cellular/Bands

Operating Bands (MHz band)	
North American Variant I:	
4G LTE CAT 1	
1900(B2)/AWS1700(B4)/850(B5)/700(B12)	
3G UMTS/HSPA	1900(B2)/850(B5)
North American Variant II:	
4G LTE CAT 1	AWS 1700(B4)/700(B13)
Data Support	SMS, UDP

### Comprehensive I/O

Ignition Inputs	1 fixed bias
Digital Inputs	2 (high/low bias selectable 0-32 VDC)
Digital Outputs	3 (open collector relay 150mA)
Serial Interface	1 TTL Port multiplexed on Input 2, Output 2
Status LEDs	2 (GPS, Cellular)

### Certifications

FCC, IC, PTCRB, RoHS Compliant

### Physical

Dimensions	3.15 x 4.33 x 1.59" (80 x 110 x 40 mm)
Weight	19.5 oz (553 g) (w/ 5200mAh Battery and Standard Harness)

### Battery Pack

Battery Capacity	up to 5200 mAh
Battery Technology	Lithium-Ion
Charging Temperature	0° to +45° C

### Environmental Standards

Temperature	-30° to +60° C (connected to primary power)  20° to +60° C (operating on internal battery)  -20° to +25° C ≤ 6 months (long term storage with battery)
Humidity	95% R.H. @ 50° C non-condensing
Shock and Vibration	U.S. Military Standards 202G, SAE J1455
ESD	IEC 61000-4-2 (4KV test) Ingress Protection Rating IP 66

### Connectors, SIM Access

GPS Antenna	Internal
Cellular Antenna	Internal
SIM Access	Internal (2FF SIM)